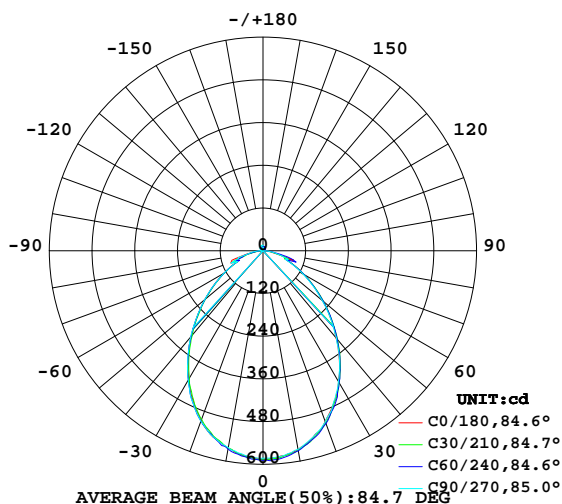


## LUMINAIRE PHOTOMETRIC TEST REPORT

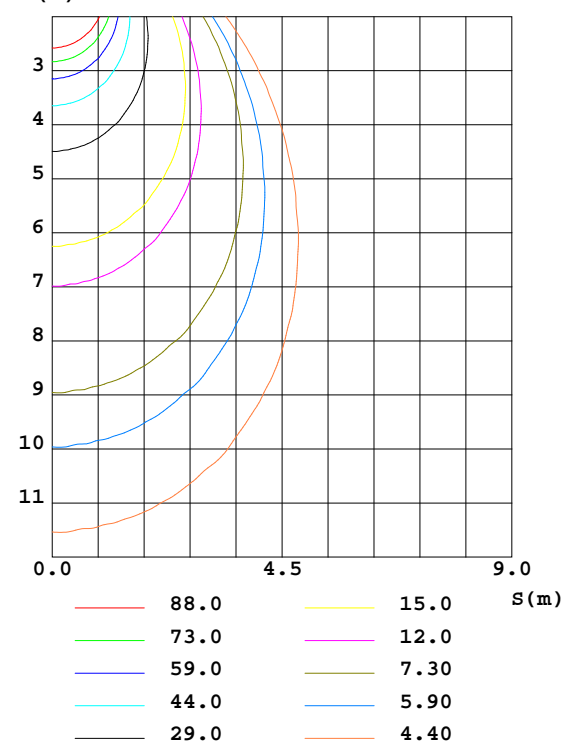
NAME:	TYPE:	WEIGHT:
DIM.:	SPEC.:	SERIAL No.:
MFR.: Rayconn	SUR.:	PROTECTION ANGLE:

DATA OF LAMP		PHOTOMETRIC DATA Eff: 81.88 lm/W			
MODEL	BL172-15W-830-W-90	Imax(cd)	591.5	S/MH(C0/180)	1.11
NOMINAL POWER(W)	15	LOR(%)	100.0	S/MH(C90/270)	1.11
RATED VOLTAGE(V)	226	TOTAL FLUX(lm)	1195.5	η UP,DN(C0-180)	0.8,49.6
NOMINAL FLUX(lm)	1195.51	CIE CLASS	DIRECT	η UP,DN(C180-360)	0.7,49.0
LAMPS INSIDE	1	η up(%)	1.5	CIBSE SHR NOM	1.00
TEST VOLTAGE(V)	226.9	η down(%)	98.5	CIBSE SHR MAX	1.15

LUMINOUS INTENSITY DISTRIBUTION DIAGRAM



C0 PLANE ISOLUX DIAGRAM (UNIT:lx)



C Range: 0 - 360DEG  
C Interval: 15.0DEG  
Test Speed: HIGH  
Temperature:25.3DEG  
Operators:QiuMing  
Test Date:2015-04-21

γ Range: 0 - 180DEG  
γ Interval: 1.0DEG  
Test System:EVERFINE GO-2000B\_V1 SYSTEM V2.0.265  
Humidity:65.0%  
Test Distance:6.200m [K=1.0000]  
Remarks:



## ZONAL FLUX DIAGRAM

### ZONAL FLUX DIAGRAM:

$\gamma$	C0	C45	C90	C135	C180	C225	C270	C315	$\gamma$	$\Phi$ zone	$\Phi$ total	$\%lum, lamp$
10	567.3	571.1	566.6	560.8	563.4	563.4	561.8	563.6	0- 10	54.84	54.84	4.59,4.59
20	510.5	516.4	511.6	506.6	508.5	505.4	510.2	507.3	10- 20	152.1	206.9	17.3,17.3
30	424.9	429.6	424.0	421.1	418.4	416.3	420.2	421.8	20- 30	215.2	422.1	35.3,35.3
40	319.5	326.4	320.9	317.0	313.8	311.9	316.4	319.3	30- 40	231.2	653.3	54.6,54.6
50	218.7	222.6	217.0	214.9	213.1	210.5	214.2	218.3	40- 50	204.8	858.1	71.8,71.8
60	131.3	134.1	128.7	127.1	126.8	123.7	126.2	130.2	50- 60	152.4	1010	84.5,84.5
70	64.31	78.38	71.00	72.71	95.58	79.71	86.22	76.36	60- 70	94.49	1105	92.4,92.4
80	24.79	35.98	30.38	29.55	35.15	29.26	37.10	24.08	70- 80	58.51	1163	97.3,97.3
90	0	0.8559	0	2.314	1.151	0	4.169	0	80- 90	14.69	1178	98.5,98.5
100	0	0.7832	0	2.575	0.0021	0	3.788	0	90-100	0.5301	1179	98.6,98.6
110	0	3.476	0	3.424	1.262	0	6.598	0	100-110	0.9246	1180	98.7,98.7
120	0	4.963	0	2.878	3.154	0	7.565	1.087	110-120	1.743	1181	98.8,98.8
130	1.213	6.582	0	4.881	4.841	0	10.23	1.645	120-130	2.495	1184	99,99
140	3.400	8.444	0	4.904	4.032	1.056	11.78	5.368	130-140	3.010	1187	99.3,99.3
150	5.628	9.616	2.766	6.494	7.514	2.943	13.12	5.291	140-150	3.137	1190	99.5,99.5
160	8.325	10.63	5.311	7.707	7.141	2.699	13.97	6.911	150-160	2.832	1193	99.8,99.8
170	4.412	10.34	6.748	7.020	8.884	4.823	14.81	9.092	160-170	1.957	1195	99.9,99.9
180	5.814	11.75	11.16	9.696	10.12	6.172	15.01	10.63	170-180	0.7311	1196	100,100
DEG	LUMINOUS INTENSITY:cd									UNIT:lm		

C Range: 0 - 360DEG  
C Interval: 15.0DEG  
Test Speed: HIGH  
Temperature:25.3DEG  
Operators:QiuMing  
Test Date:2015-04-21

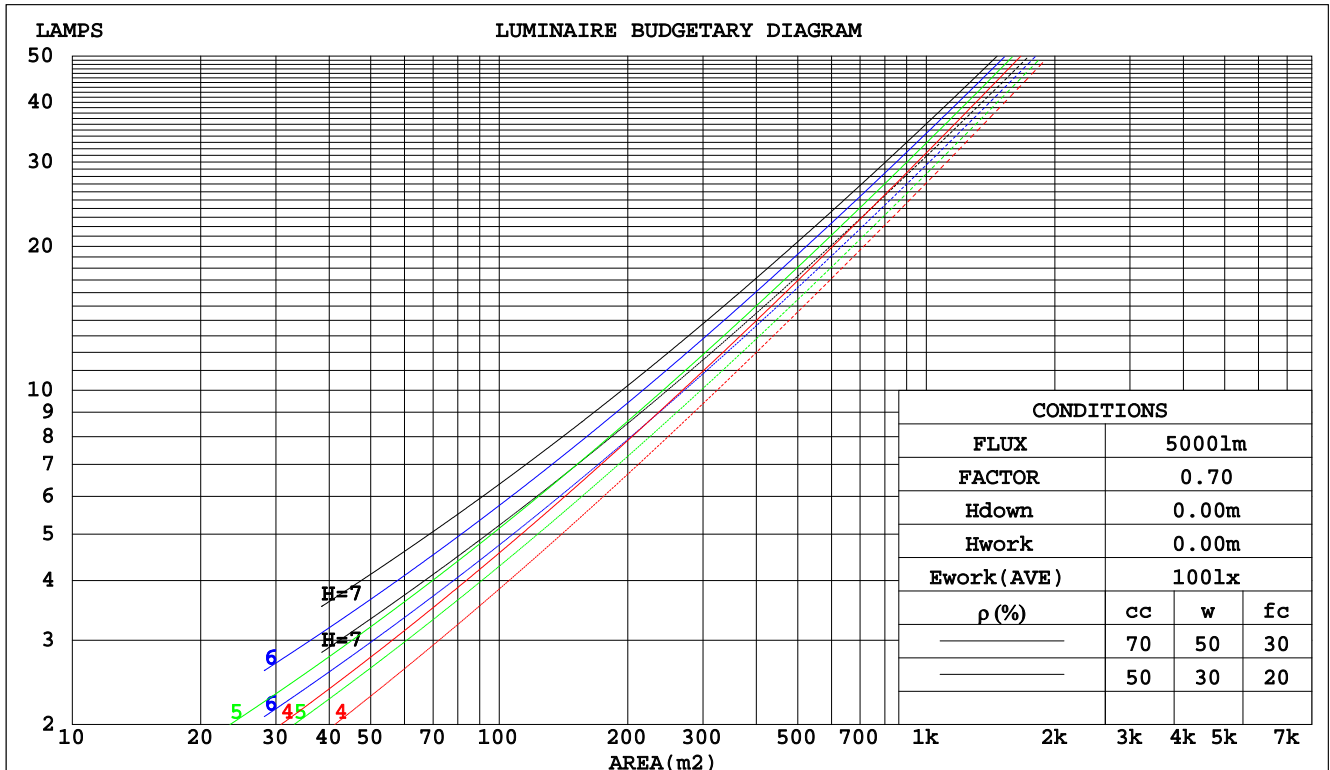
$\gamma$  Range: 0 - 180DEG  
 $\gamma$  Interval: 1.0DEG  
 $\gamma$  Test System:EVERFINE GO-2000B\_V1 SYSTEM V2.0.265  
Humidity:65.0%  
Test Distance:6.200m [K=1.0000]  
Remarks:



### CU AND LUMINAIRE BUDGETARY ESTIMATE DIAGRAM

NAME:	TYPE:	WEIGHT:
DIM.:	SPEC.:	SERIAL No.:
MFR.: Rayconn	SUR.:	PROTECTION ANGLE:

pcc	80%			70%			50%			30%			10%			0
pw	50%	30%	10%	50%	30%	10%	50%	30%	10%	50%	30%	10%	50%	30%	10%	0
pfc	20%			20%			20%			20%			20%			0
RCR	RCR:Room Cavity Ratio						Coefficients of Utilization(CU)									
0.0	1.19	1.19	1.19	1.16	1.16	1.16	1.10	1.10	1.10	1.05	1.05	1.05	1.01	1.01	1.01	.99
1.0	1.05	1.02	.98	1.03	.90	.96	.99	.96	.93	.94	.92	.90	.91	.89	.87	.85
2.0	.93	.87	.82	.91	.86	.81	.88	.83	.79	.84	.80	.77	.81	.78	.75	.73
3.0	.83	.76	.70	.82	.75	.69	.79	.73	.68	.76	.71	.67	.73	.69	.65	.63
4.0	.75	.67	.61	.73	.66	.60	.71	.64	.59	.68	.63	.58	.66	.61	.57	.55
5.0	.68	.59	.53	.66	.59	.53	.64	.57	.52	.62	.56	.52	.60	.55	.51	.49
6.0	.61	.53	.47	.60	.53	.47	.59	.52	.46	.57	.51	.46	.55	.50	.45	.44
7.0	.56	.48	.42	.55	.48	.42	.54	.47	.42	.52	.46	.41	.51	.45	.41	.39
8.0	.52	.44	.38	.51	.43	.38	.49	.43	.38	.48	.42	.37	.47	.41	.37	.35
9.0	.48	.40	.35	.47	.40	.35	.46	.39	.34	.45	.39	.34	.44	.38	.34	.32
10.0	.44	.37	.32	.44	.36	.32	.43	.36	.31	.42	.36	.31	.41	.35	.31	.29



C Range: 0 - 360DEG  
C Interval: 15.0DEG  
Test Speed: HIGH  
Temperature: 25.3DEG  
Operators: QiuMing  
Test Date: 2015-04-21

γ Range: 0 - 180DEG  
γ Interval: 1.0DEG  
Test System: EVERFINE GO-2000B\_V1 SYSTEM V2.0.265  
Humidity: 65.0%  
Test Distance: 6.200m [K=1.0000]  
Remarks:



## WEC AND CCEC

NAME:	TYPE:	WEIGHT:
DIM.:	SPEC.:	SERIAL No.:
MFR.: Rayconn	SUR.:	PROTECTION ANGLE:

pcc	80%	70%	50%	30%	10%	0
pw	50% 30% 10%	50% 30% 10%	50% 30% 10%	50% 30% 10%	50% 30% 10%	0
pfc	20%	20%	20%	20%	20%	0
RCR	RCR:Room Cavity Ratio Wall Exitance Coefficients(WEC)					
0.0						
1.0	.273 .155 .049	.266 .152 .048	.252 .145 .046	.239 .138 .044	.228 .132 .043	
2.0	.260 .142 .044	.253 .139 .043	.241 .134 .042	.230 .129 .040	.219 .124 .039	
3.0	.242 .129 .039	.237 .127 .038	.226 .122 .037	.216 .118 .036	.207 .114 .035	
4.0	.226 .117 .034	.221 .115 .034	.211 .112 .033	.202 .109 .033	.194 .105 .032	
5.0	.210 .107 .031	.206 .106 .031	.197 .103 .030	.190 .100 .030	.182 .097 .029	
6.0	.196 .098 .028	.192 .097 .028	.185 .095 .028	.178 .092 .027	.171 .090 .027	
7.0	.184 .091 .026	.180 .090 .026	.174 .088 .025	.167 .086 .025	.161 .084 .025	
8.0	.173 .084 .024	.170 .084 .024	.164 .082 .023	.158 .080 .023	.153 .078 .023	
9.0	.163 .079 .022	.160 .078 .022	.155 .076 .022	.149 .075 .021	.144 .073 .021	
10.0	.154 .074 .020	.151 .073 .020	.146 .072 .020	.142 .070 .020	.137 .069 .020	

pcc	80%	70%	50%	30%	10%	0
pw	50% 30% 10%	50% 30% 10%	50% 30% 10%	50% 30% 10%	50% 30% 10%	0
pfc	20%	20%	20%	20%	20%	0
RCR	RCR:Room Cavity Ratio Ceiling Cavity Exitance Coefficients(CCEC)					
0.0	.202 .202 .202	.172 .172 .172	.118 .118 .118	.068 .068 .068	.022 .022 .022	
1.0	.189 .168 .148	.162 .144 .128	.111 .099 .088	.064 .057 .051	.020 .018 .017	
2.0	.179 .143 .113	.153 .123 .098	.105 .085 .068	.061 .050 .040	.019 .016 .013	
3.0	.170 .125 .089	.146 .108 .078	.100 .075 .054	.058 .044 .032	.019 .014 .011	
4.0	.162 .112 .073	.139 .097 .064	.096 .067 .045	.055 .039 .026	.018 .013 .009	
5.0	.155 .101 .062	.133 .088 .054	.092 .061 .038	.053 .036 .022	.017 .012 .007	
6.0	.148 .093 .053	.127 .080 .046	.088 .056 .033	.051 .033 .019	.016 .011 .006	
7.0	.141 .086 .047	.122 .074 .041	.084 .052 .029	.049 .031 .017	.016 .010 .006	
8.0	.135 .080 .042	.116 .069 .036	.080 .049 .026	.047 .029 .015	.015 .009 .005	
9.0	.129 .075 .038	.111 .065 .033	.077 .046 .024	.045 .027 .014	.015 .009 .005	
10.0	.124 .071 .035	.107 .061 .031	.074 .043 .022	.043 .025 .013	.014 .008 .004	

C Range: 0 - 360DEG  
C Interval: 15.0DEG  
Test Speed: HIGH  
Temperature: 25.3DEG  
Operators: QiuMing  
Test Date: 2015-04-21

γ Range: 0 - 180DEG  
γ Interval: 1.0DEG  
Test System: EVERFINE GO-2000B\_V1 SYSTEM V2.0.265  
Humidity: 65.0%  
Test Distance: 6.200m [K=1.0000]  
Remarks:



### Uncorrected UGR Table

NAME:					TYPE:					WEIGHT:				
DIM.:					SPEC.:					SERIAL No.:				
MFR.: Rayconn					SUR.:					PROTECTION ANGLE:				
ceiling/cavity	0.7	0.7	0.5	0.5	0.3	0.7	0.7	0.5	0.5	0.3				
walls	0.5	0.3	0.5	0.3	0.3	0.5	0.3	0.5	0.3	0.3				
working plane	0.2	0.2	0.2	0.2	0.2	0.2	0.2	0.2	0.2	0.2				
Room dimensions					Viewed crosswise					Viewed endwise				
x = 2H y = 2H					24.4	25.7	24.7	26.0	26.2	24.3	25.7	24.6	25.9	26.1
3H					25.3	26.6	25.6	26.8	27.1	25.2	26.5	25.6	26.8	27.0
4H					25.9	27.1	26.2	27.4	27.6	26.0	27.2	26.3	27.4	27.7
6H					26.2	27.3	26.5	27.6	27.9	26.3	27.4	26.7	27.7	28.0
8H					26.2	27.3	26.6	27.6	27.9	26.4	27.5	26.8	27.8	28.1
12H					26.2	27.3	26.6	27.6	27.9	26.5	27.5	26.8	27.8	28.1
4H 2H					24.7	25.9	25.0	26.2	26.5	24.7	25.9	25.0	26.1	26.4
3H					25.9	26.9	26.3	27.3	27.6	26.0	27.0	26.4	27.4	27.7
4H					26.6	27.6	27.0	27.9	28.3	27.0	27.9	27.4	28.3	28.6
6H					27.0	27.9	27.4	28.2	28.6	27.5	28.3	27.9	28.7	29.1
8H					27.2	27.9	27.6	28.3	28.7	27.6	28.4	28.1	28.8	29.2
12H					27.2	27.9	27.7	28.3	28.8	27.7	28.4	28.2	28.8	29.3
8H 4H					26.9	27.7	27.3	28.1	28.5	27.2	28.0	27.7	28.4	28.8
6H					27.4	28.0	27.9	28.5	28.9	27.9	28.5	28.4	29.0	29.4
8H					27.6	28.2	28.1	28.6	29.1	28.1	28.7	28.6	29.1	29.6
12H					27.8	28.3	28.3	28.7	29.2	28.3	28.8	28.8	29.3	29.8
12H 4H					26.9	27.6	27.4	28.0	28.5	27.2	27.9	27.7	28.4	28.8
6H					27.5	28.0	27.9	28.5	29.0	27.9	28.5	28.4	29.0	29.4
8H					27.7	28.2	28.2	28.7	29.2	28.2	28.7	28.7	29.2	29.7
Variations with the observer position at spacings:														
S = 1.0H					+ 0.4 / - 0.6					+ 0.3 / - 0.4				
1.5H					+ 0.3 / - 0.4					+ 0.2 / - 0.3				
2.0H					+ 0.6 / - 0.7					+ 0.6 / - 0.9				

CIE Pub.117 Corrected 1196 lm Total Lamp Luminous Flux.(8log(F/F0) = 0.6)

C Range: 0 - 360DEG  
C Interval: 15.0DEG  
Test Speed: HIGH  
Temperature: 25.3DEG  
Operators: QiuMing  
Test Date: 2015-04-21

γ Range: 0 - 180DEG  
γ Interval: 1.0DEG  
Test System: EVERFINE GO-2000B\_V1 SYSTEM V2.0.265  
Humidity: 65.0%  
Test Distance: 6.200m [K=1.0000]  
Remarks:



## UTILIZATION FACTORS TABLE

NAME:	TYPE:	WEIGHT:
DIM.:	SPEC.:	SERIAL No.:
MFR.: Rayconn	SUR.:	PROTECTION ANGLE:

REFLECTANCE										
Ceiling	0.8	0.8	0.8	0.7	0.7	0.7	0.5	0.5	0.5	0
Walls	0.7	0.5	0.3	0.7	0.5	0.3	0.7	0.5	0.3	0
Working plane	0.2	0.2	0.2	0.2	0.2	0.2	0.2	0.2	0.2	0
ROOM INDEX	UTILIZATION FACTORS(PERCENT)    k(RI) x RCR = 5									
k = 0.60	63	53	47	63	53	46	61	52	46	40
0.80	73	63	56	72	62	56	70	62	56	49
1.00	81	71	65	80	71	64	78	72	64	57
1.25	88	78	72	86	78	72	83	76	71	64
1.50	92	83	77	90	83	77	87	81	76	69
2.00	98	91	85	96	89	84	93	87	82	75
2.50	101	95	89	99	93	88	95	90	86	78
3.00	104	98	93	102	97	92	98	94	90	82
4.00	108	103	99	105	101	97	101	97	94	85
5.00	110	106	102	107	103	100	103	100	97	88
ROOM INDEX	UF(total)									Direct
According to DIN EN 13032-2 2004										
Suspended										
SHRNOM = 1.25										

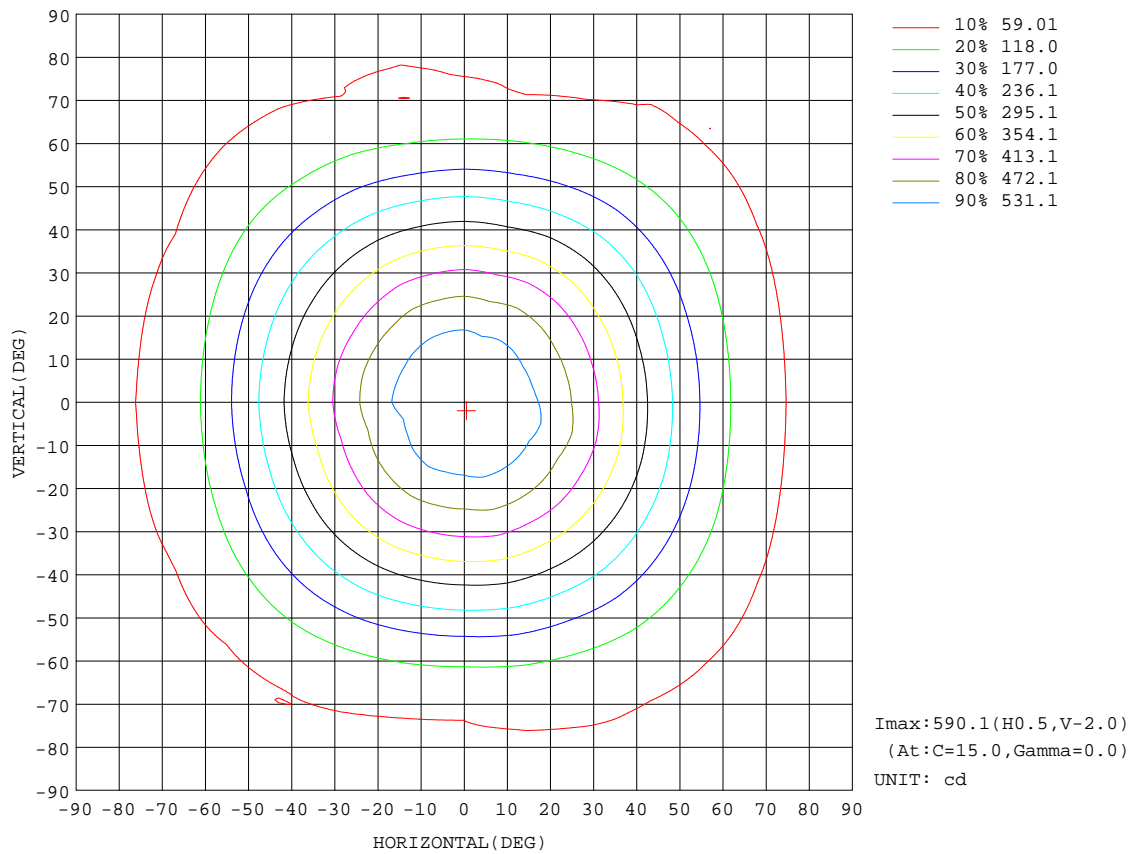
C Range: 0 - 360DEG  
C Interval: 15.0DEG  
Test Speed: HIGH  
Temperature: 25.3DEG  
Operators: QiuMing  
Test Date: 2015-04-21

$\gamma$  Range: 0 - 180DEG  
 $\gamma$  Interval: 1.0DEG  
 $\gamma$  Test System: EVERFINE GO-2000B\_V1 SYSTEM V2.0.265  
Humidity: 65.0%  
Test Distance: 6.200m [K=1.0000]  
Remarks:



ISOCANDELA DIAGRAM

NAME:	TYPE:	WEIGHT:
DIM.:	SPEC.:	SERIAL No.:
MFR.: Rayconn	SUR.:	PROTECTION ANGLE:



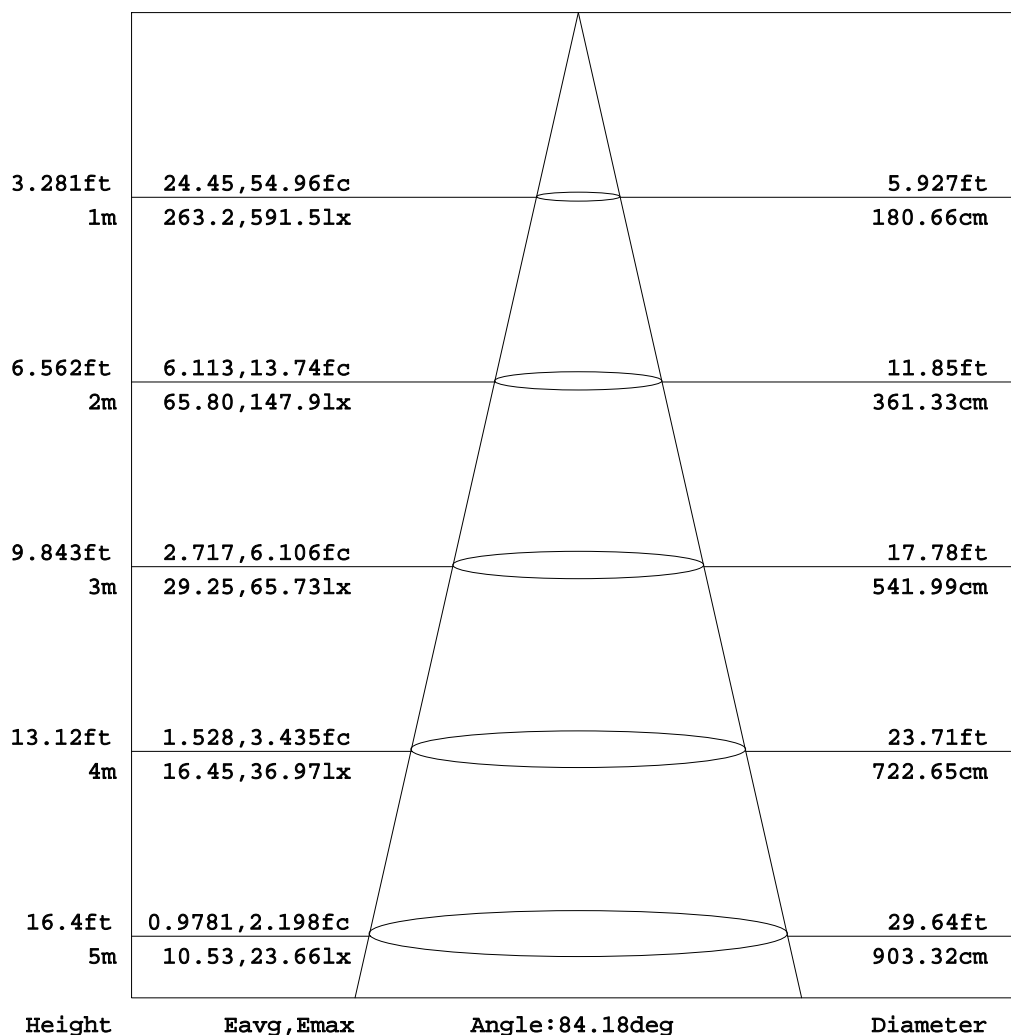
C Range: 0 - 360DEG	γ Range: 0 - 180DEG
C Interval: 15.0DEG	γ Interval: 1.0DEG
Test Speed: HIGH	Test System: EVERFINE GO-2000B_V1 SYSTEM V2.0.265
Temperature: 25.3DEG	Humidity: 65.0%
Operators: QiuMing	Test Distance: 6.200m [K=1.0000]
Test Date: 2015-04-21	Remarks:



### AAI Figure

NAME:	TYPE:	WEIGHT:
DIM.:	SPEC.:	SERIAL No.:
MFR.: Rayconn	SUR.:	PROTECTION ANGLE:

Flux out:719.1 lm



Note: The Curves indicate the illuminated area and the average illumination when the luminaire is at different distance.

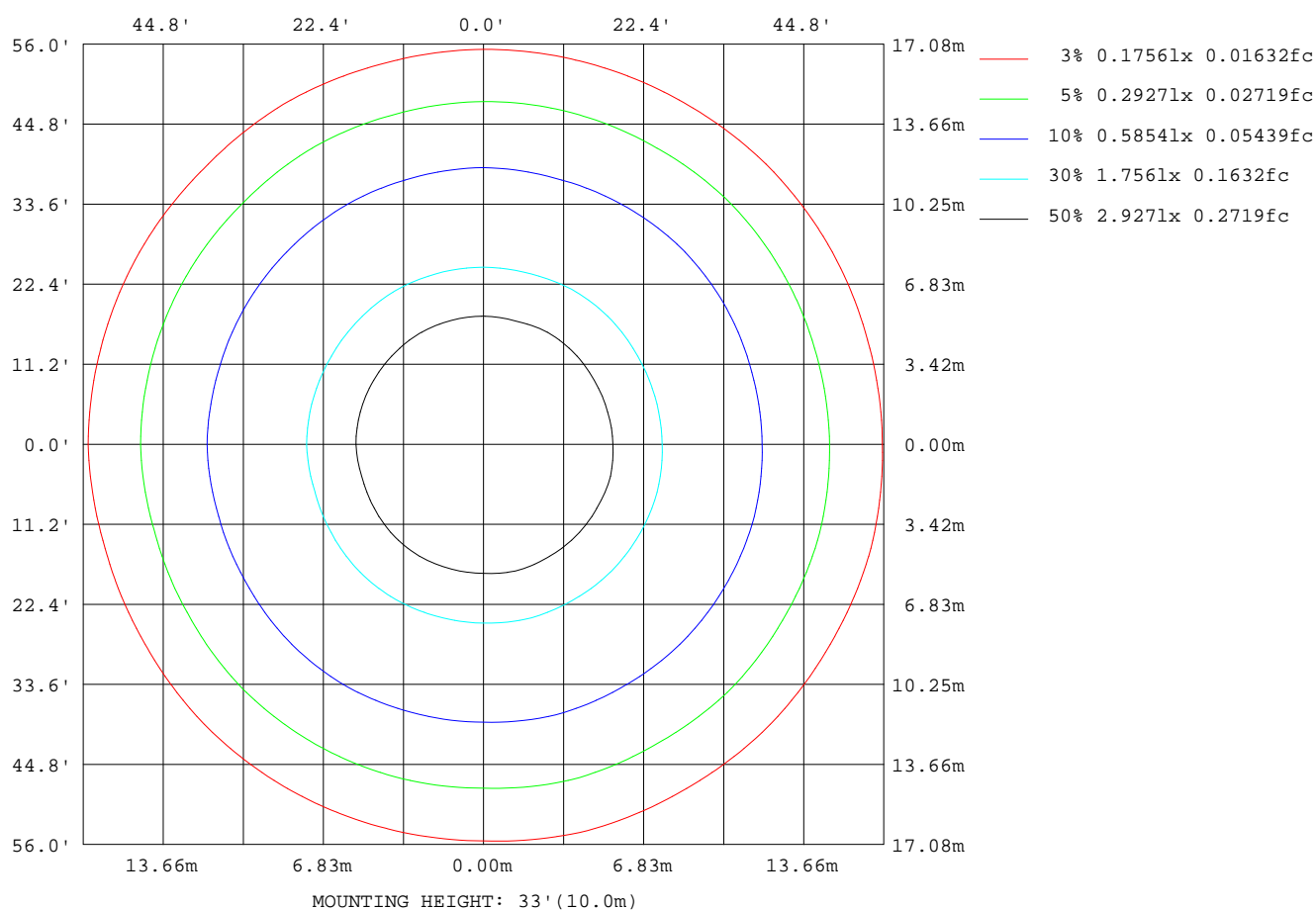
C Range: 0 - 360DEG  
C Interval: 15.0DEG  
Test Speed: HIGH  
Temperature: 25.3DEG  
Operators: QiuMing  
Test Date: 2015-04-21

γ Range: 0 - 180DEG  
γ Interval: 1.0DEG  
Test System: EVERFINE GO-2000B\_V1 SYSTEM V2.0.265  
Humidity: 65.0%  
Test Distance: 6.200m [K=1.0000]  
Remarks:



# ISOLUX DIAGRAM

NAME:	TYPE:	WEIGHT:
DIM.:	SPEC.:	SERIAL No.:
MFR.: Rayconn	SUR.:	PROTECTION ANGLE:

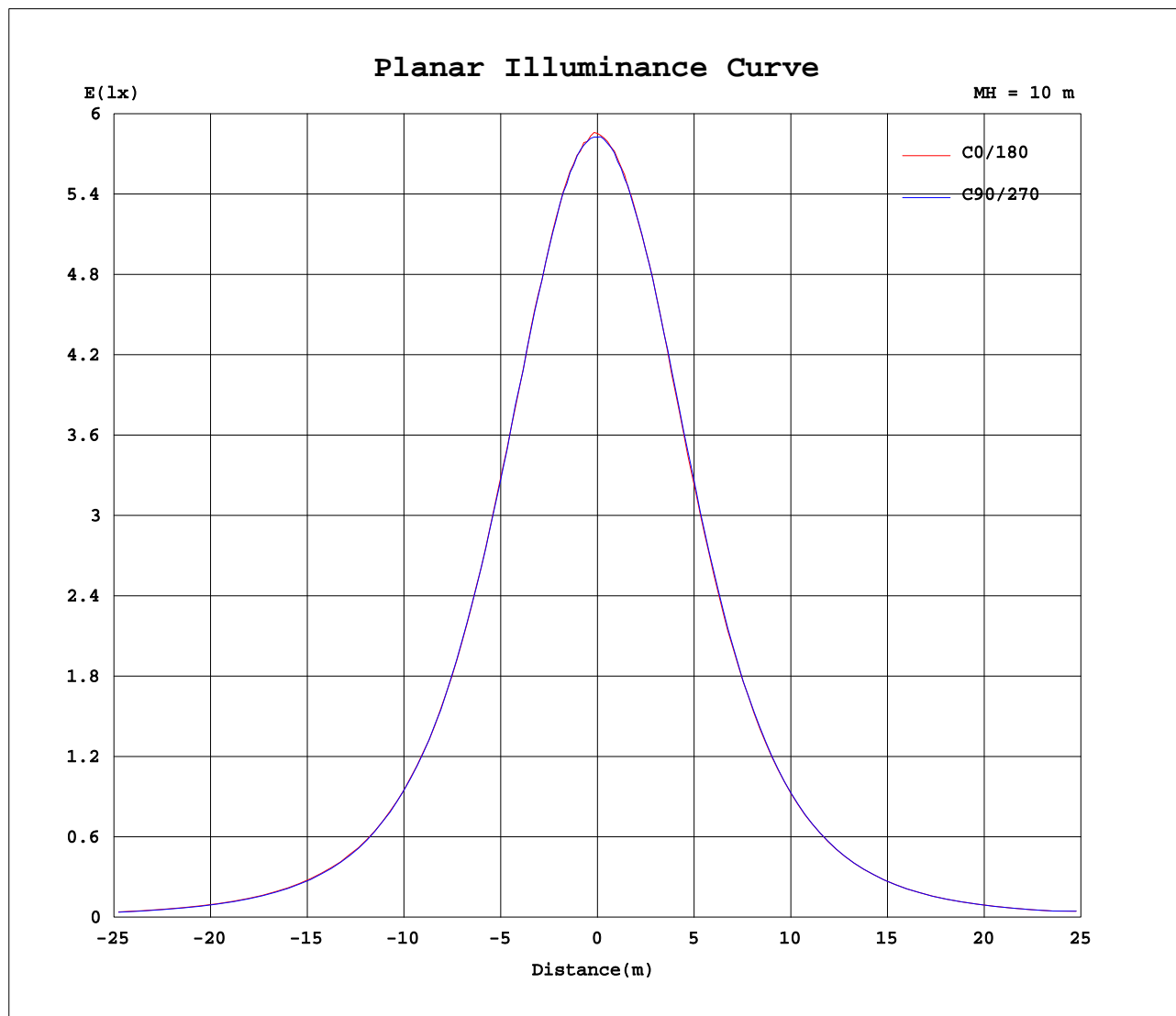


C Range: 0 - 360DEG  
C Interval: 15.0DEG  
Test Speed: HIGH  
Temperature: 25.3DEG  
Operators: QiuMing  
Test Date: 2015-04-21

γ Range: 0 - 180DEG  
γ Interval: 1.0DEG  
Test System: EVERFINE GO-2000B\_V1 SYSTEM V2.0.265  
Humidity: 65.0%  
Test Distance: 6.200m [K=1.0000]  
Remarks:



## Planar Illuminance Curve



C Range: 0 - 360DEG  
C Interval: 15.0DEG  
Test Speed: HIGH  
Temperature: 25.3DEG  
Operators: QiuMing  
Test Date: 2015-04-21

$\gamma$  Range: 0 - 180DEG  
 $\gamma$  Interval: 1.0DEG  
Test System: EVERFINE GO-2000B\_V1 SYSTEM V2.0.265  
Humidity: 65.0%  
Test Distance: 6.200m [K=1.0000]  
Remarks:



## LUMINOUS DISTRIBUTION INTENSITY DATA

NAME:	TYPE:	WEIGHT:
DIM.:	SPEC.:	SERIAL No.:
MFR.: Rayconn	SUR.:	PROTECTION ANGLE:

Table--1

UNIT: cd

C(DEG) γ (DEG)	0	15	30	45	60	75	90	105	120	135	150	165	180	195	210	225	240	255	270
0	585	592	586	589	589	590	582	582	585	581	576	575	585	592	586	589	589	590	582
5	579	586	583	586	586	584	580	579	580	577	573	571	579	583	581	582	581	585	577
10	567	575	569	571	571	572	567	563	566	561	558	552	563	567	562	563	566	568	562
15	543	551	545	547	547	549	542	541	542	538	532	529	542	540	538	540	541	544	542
20	510	520	515	516	517	517	512	510	512	507	502	500	508	507	504	505	510	508	510
25	471	481	473	477	478	478	469	469	471	466	462	457	464	467	462	465	469	466	469
30	425	432	428	430	428	431	424	423	424	421	414	410	418	417	414	416	420	419	420
35	374	377	378	379	377	379	375	372	373	369	363	359	367	363	363	364	368	368	369
40	320	325	326	326	325	325	321	318	319	317	311	308	314	314	309	312	314	315	316
45	269	273	273	274	272	273	268	266	266	265	260	259	262	259	259	260	262	261	263
50	219	222	222	223	221	222	217	216	218	215	210	209	213	209	211	210	213	212	214
55	174	176	176	177	174	175	171	170	170	169	164	164	168	167	166	165	167	166	168
60	131	134	133	134	133	133	129	128	128	127	124	123	127	126	125	124	126	125	126
65	94.4	96.4	96.0	96.2	94.2	95.3	92.2	92.3	91.3	90.3	88.7	88.6	90.7	90.1	90.1	88.9	90.4	89.7	90.5
70	64.3	75.7	64.1	78.4	83.8	71.9	71.0	78.1	71.4	72.7	64.8	74.4	95.6	79.8	89.6	79.7	82.0	81.6	86.2
75	54.7	51.8	51.8	59.2	75.9	76.8	53.0	55.3	55.4	60.2	43.2	40.3	70.2	40.0	50.4	53.6	57.2	81.3	65.2
80	24.8	32.9	25.7	36.0	36.6	40.1	30.4	30.9	29.7	29.6	22.3	18.6	35.2	28.3	24.4	29.3	31.2	49.7	37.1
85	5.91	16.6	12.9	16.6	17.0	16.2	12.9	17.2	13.2	15.8	6.58	3.08	16.2	7.74	10.9	10.3	14.5	23.5	21.7
90	0.00	0.00	0.00	0.86	0.00	0.00	0.00	0.01	0.00	2.31	0.00	0.00	1.15	0.00	0.00	0.00	1.25	0.00	4.17
95	0.00	0.00	0.00	0.38	0.00	1.17	0.00	1.18	0.00	2.42	0.00	0.00	0.00	0.00	0.00	0.00	0.01	0.00	3.76
100	0.00	0.00	0.00	0.78	0.00	1.10	0.00	2.38	0.00	2.57	0.00	0.00	0.00	0.00	0.00	0.00	0.82	0.00	3.79
105	0.00	0.00	1.37	2.29	0.33	1.19	0.00	2.52	0.00	1.90	0.00	0.00	0.00	0.00	0.00	0.00	1.44	0.00	5.03
110	0.00	0.00	1.28	3.48	1.89	2.63	0.00	2.95	1.24	3.42	0.00	0.00	1.26	0.00	0.00	0.00	2.49	0.46	6.60
115	0.00	0.00	2.27	2.94	2.40	4.13	0.00	4.58	2.06	4.36	0.00	0.00	1.85	0.00	0.00	0.00	3.37	3.42	7.48
120	0.00	0.00	3.33	4.96	4.49	5.23	0.00	4.85	3.31	2.88	0.00	0.00	3.15	0.00	0.00	0.00	3.82	5.75	7.57
125	0.01	0.00	4.21	5.47	5.09	6.27	0.00	6.01	4.15	2.02	0.00	0.00	4.24	0.00	0.00	0.00	3.90	6.32	9.05
130	1.21	0.00	6.49	6.58	7.67	6.92	0.00	8.00	6.27	4.88	0.00	0.00	4.84	0.01	0.00	0.00	5.63	8.33	10.2
135	2.41	0.00	6.17	7.12	8.09	7.76	0.00	8.03	5.70	4.06	0.00	0.00	3.29	0.52	0.55	0.24	6.44	8.61	10.7
140	3.40	1.77	7.26	8.44	8.55	8.45	0.00	9.12	6.29	4.90	0.00	0.00	4.03	1.26	2.20	1.06	5.94	9.83	11.8
145	3.80	2.18	8.08	8.34	8.73	8.91	1.19	9.53	6.08	6.19	0.00	0.00	6.56	2.69	3.76	2.06	6.82	9.89	12.4
150	5.63	3.08	8.18	9.62	10.7	9.85	2.77	10.5	6.16	6.49	0.00	0.00	7.51	3.01	2.92	2.94	7.38	10.9	13.1
155	5.26	3.97	9.67	9.91	10.5	10.7	5.41	10.6	7.09	7.16	0.00	0.00	6.44	2.56	4.13	3.18	8.40	12.5	13.9
160	8.33	3.68	9.07	10.6	11.8	10.5	5.31	10.8	7.58	7.71	0.00	0.00	7.14	2.57	3.30	2.70	7.95	13.0	14.0
165	4.73	4.94	9.69	10.4	11.1	11.3	7.14	11.7	7.14	8.51	0.00	0.00	8.91	3.36	3.58	2.60	9.25	13.7	15.7
170	4.41	5.28	10.3	10.3	11.3	11.4	6.75	11.9	7.21	7.02	0.00	0.16	8.88	5.81	3.87	4.82	9.90	14.5	14.8
175	5.09	5.15	11.1	12.1	11.8	12.2	8.37	11.8	7.27	7.44	0.00	0.49	9.85	5.09	4.65	5.45	9.45	14.9	15.5
180	5.81	4.78	11.7	11.8	12.1	11.3	11.2	12.1	8.09	9.70	0.00	1.15	10.1	6.96	5.48	6.17	9.04	15.3	15.0

C Range: 0 - 360DEG  
C Interval: 15.0DEG  
Test Speed: HIGH  
Temperature: 25.3DEG  
Operators: QiuMing  
Test Date: 2015-04-21

γ Range: 0 - 180DEG  
γ Interval: 1.0DEG  
Test System: EVERFINE GO-2000B\_V1 SYSTEM V2.0.265  
Humidity: 65.0%  
Test Distance: 6.200m [K=1.0000]  
Remarks:



# LUMINOUS DISTRIBUTION INTENSITY DATA

NAME:	TYPE:	WEIGHT:
DIM.:	SPEC.:	SERIAL No.:
MFR.: Rayconn	SUR.:	PROTECTION ANGLE:

Table--2

UNIT: cd

C(DEG) γ (DEG)	285	300	315	330	345														
0	582	585	581	576	575														
5	578	579	576	573	573														
10	563	565	564	560	559														
15	535	541	539	536	537														
20	504	512	507	505	507														
25	464	471	469	467	468														
30	417	424	422	420	421														
35	366	372	372	370	370														
40	312	319	319	317	319														
45	260	264	269	267	266														
50	212	215	218	218	217														
55	169	169	172	171	172														
60	127	128	130	131	130														
65	91.1	92.7	93.7	94.2	95.4														
70	64.7	77.1	76.4	78.6	64.4														
75	41.2	45.1	58.8	56.2	48.7														
80	22.8	23.2	24.1	33.2	25.8														
85	6.38	7.85	8.22	19.3	11.3														
90	0.00	0.00	0.00	3.99	0.00														
95	0.00	0.00	0.00	1.63	0.00														
100	0.00	0.00	0.00	1.89	0.00														
105	0.00	0.00	0.00	2.52	0.00														
110	0.00	0.00	0.00	3.52	0.00														
115	0.00	0.00	0.00	2.72	0.00														
120	0.00	0.00	1.09	3.81	0.00														
125	0.00	0.00	1.32	5.34	0.00														
130	0.00	0.00	1.65	6.00	0.00														
135	0.03	0.00	3.08	6.41	0.00														
140	0.42	0.00	5.37	7.50	0.00														
145	1.10	0.16	4.47	7.83	0.00														
150	1.43	0.00	5.29	7.77	0.00														
155	2.14	0.00	6.14	8.96	0.00														
160	2.07	0.90	6.91	10.2	0.73														
165	3.26	2.25	6.50	9.99	0.67														
170	1.82	3.21	9.09	9.52	0.23														
175	3.02	1.98	10.8	10.8	1.79														
180	3.41	3.23	10.6	11.3	1.62														

C Range: 0 - 360DEG  
C Interval: 15.0DEG  
Test Speed: HIGH  
Temperature:25.3DEG  
Operators:QiuMing  
Test Date:2015-04-21

γ Range: 0 - 180DEG  
γ Interval: 1.0DEG  
Test System:EVERFINE GO-2000B\_V1 SYSTEM V2.0.265  
Humidity:65.0%  
Test Distance:6.200m [K=1.0000]  
Remarks: