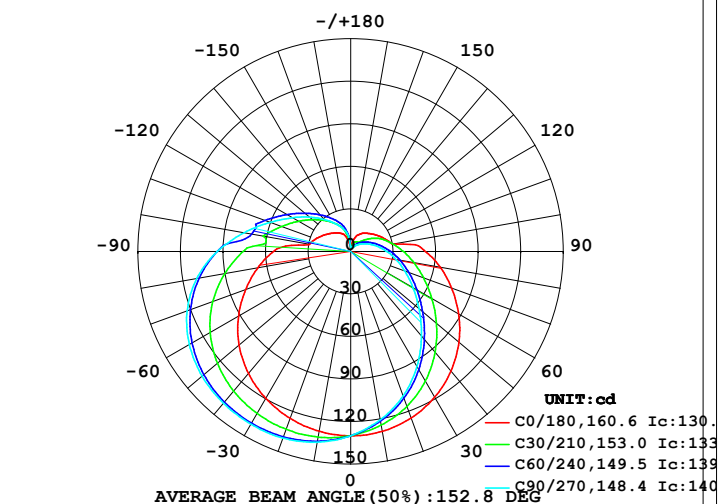


LUMINAIRE PHOTOMETRIC TEST REPORT

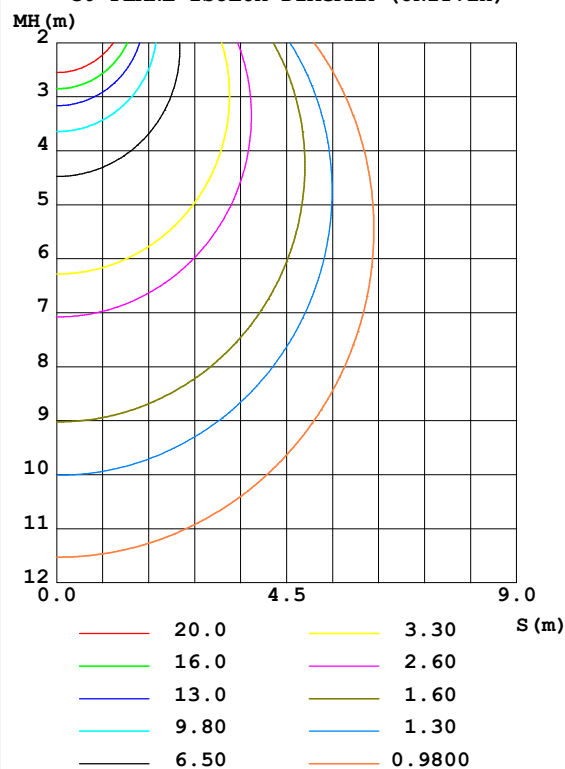
Test:U:48.00V I:0.1872A P:8.986W PF:1.000 Freq:50.00Hz Lamp Flux:766.573x1 lm		
NAME: M20-T43001A-9G30-120D	TYPE:	WEIGHT:
SPEC.:	DIM.:	SERIAL No.:
MFR.:	SUR.:100*116.4	Shielding Angle:

DATA OF LAMP		PHOTOMETRIC DATA Eff: 85.31 lm/W			
MODEL	3000K CRI90	I _{max} (cd)	140.8	S/MH(C0/180)	1.38
NOMINAL POWER(W)	9	LOR(%)	100.0	S/MH(C90/270)	1.64
RATED VOLTAGE(V)	226	TOTAL FLUX(lm)	766.57	η UP,DN(C0-180)	7.0,28.2
NOMINAL FLUX(lm)	766.573	CIE CLASS	SEMI-D.	η UP,DN(C180-360)	18.1,46.7
LAMPS INSIDE	1	η up(%)	25.1	CIBSE SHR NOM	1.50
TEST VOLTAGE(V)	225.1	η down(%)	74.9	CIBSE SHR MAX	1.55

LUMINOUS INTENSITY DISTRIBUTION DIAGRAM



C0 PLANE ISOLUX DIAGRAM (UNIT:lx)



C Range: 0 - 360DEG
 C Interval: 15.0DEG
 Test Speed: HIGH
 Temperature:25.3DEG
 Operators:ZR
 Test Date:2021-08-18

γ Range: 0 - 180DEG
 γ Interval: 1.0DEG
 Test System:EVERFINE GO-2000B_V1 SYSTEM V2.0.354
 Humidity:65.0%
 Test Distance:8.402m [K=1.0000]
 Remarks:

ZONAL FLUX DIAGRAM

ZONAL FLUX DIAGRAM:

γ	C0	C45	C90	C135	C180	C225	C270	C315	γ	Φ zone	Φ total	%lum, lamp
10	128.8	122.8	120.6	123.2	128.7	134.5	136.6	133.8	0- 10	12.34	12.34	1.61,1.61
20	125.0	112.8	108.4	114.2	125.2	136.7	140.0	134.9	10- 20	35.89	48.24	6.29,6.29
30	118.6	100.3	93.64	102.6	119.7	136.7	140.7	133.5	20- 30	56.18	104.4	13.6,13.6
40	110.1	86.05	77.73	88.97	112.3	134.6	139.7	129.9	30- 40	71.60	176.0	23,23
50	99.72	71.70	63.05	74.57	102.8	130.0	136.8	124.5	40- 50	81.34	257.4	33.6,33.6
60	87.93	58.95	50.72	61.28	91.34	122.8	131.4	117.2	50- 60	85.39	342.8	44.7,44.7
70	75.79	48.37	40.69	50.07	78.85	113.1	122.7	107.3	60- 70	84.19	426.9	55.7,55.7
80	64.16	39.48	32.52	40.78	66.62	100.5	110.3	94.79	70- 80	78.37	505.3	65.9,65.9
90	52.70	32.05	25.65	33.01	54.41	85.94	94.12	80.47	80- 90	68.88	574.2	74.9,74.9
100	30.50	25.78	19.85	26.51	29.64	65.92	76.41	66.32	90-100	55.83	630.0	82.2,82.2
110	25.95	20.52	14.99	21.07	26.26	58.51	60.41	54.03	100-110	43.63	673.7	87.9,87.9
120	22.44	16.19	11.07	16.56	22.80	47.73	47.66	43.91	110-120	33.11	706.8	92.2,92.2
130	19.41	12.10	7.967	12.68	19.73	38.89	37.78	35.62	120-130	23.74	730.5	95.3,95.3
140	16.87	8.257	5.725	8.897	17.17	31.53	29.72	28.70	130-140	16.23	746.7	97.4,97.4
150	14.52	5.399	4.218	5.833	15.01	25.38	23.12	22.86	140-150	10.46	757.2	98.8,98.8
160	11.51	4.371	3.282	3.982	12.07	19.91	17.77	17.64	150-160	6.128	763.3	99.6,99.6
170	5.835	2.834	2.843	3.163	5.916	11.66	12.33	11.22	160-170	2.756	766.1	99.9,99.9
180	2.683	2.776	2.737	2.745	2.693	2.792	2.758	2.729	170-180	0.4972	766.6	100,100
DEG	LUMINOUS INTENSITY:cd									UNIT:lm		

Conical surface Flux(90deg): 215.83 lm

%lum = 28.2%

%lamp = 28.2%

Conical surface Flux(120deg): 342.76 lm

%lum = 44.7%

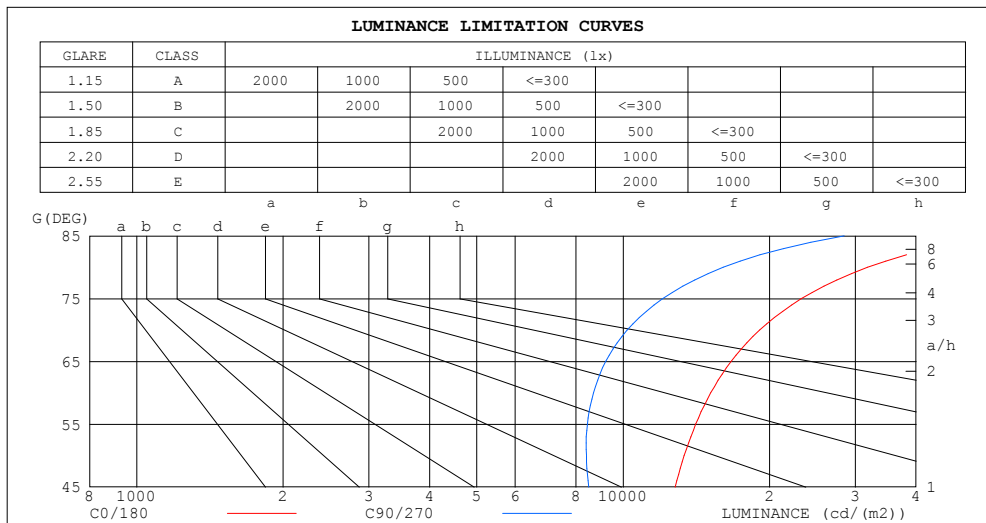
%lamp = 44.7%

C Range: 0 - 360DEG
 C Interval: 15.0DEG
 Test Speed: HIGH
 Temperature:25.3DEG
 Operators:ZR
 Test Date:2021-08-18

γ Range: 0 - 180DEG
 γ Interval: 1.0DEG
 Test System:EVERFINE GO-2000B_V1 SYSTEM V2.0.354
 Humidity:65.0%
 Test Distance:8.402m [K=1.0000]
 Remarks:

LUMINANCE LIMITATION CURVES

Test:U:48.00V I:0.1872A P:8.986W PF:1.000 Freq:50.00Hz Lamp Flux:766.573x1 lm		
NAME: M20-T43001A-9G30-120D	TYPE:	WEIGHT:
SPEC.:	DIM.:	SERIAL No.:
MFR.:	SUR.:100*116.4	Shielding Angle:



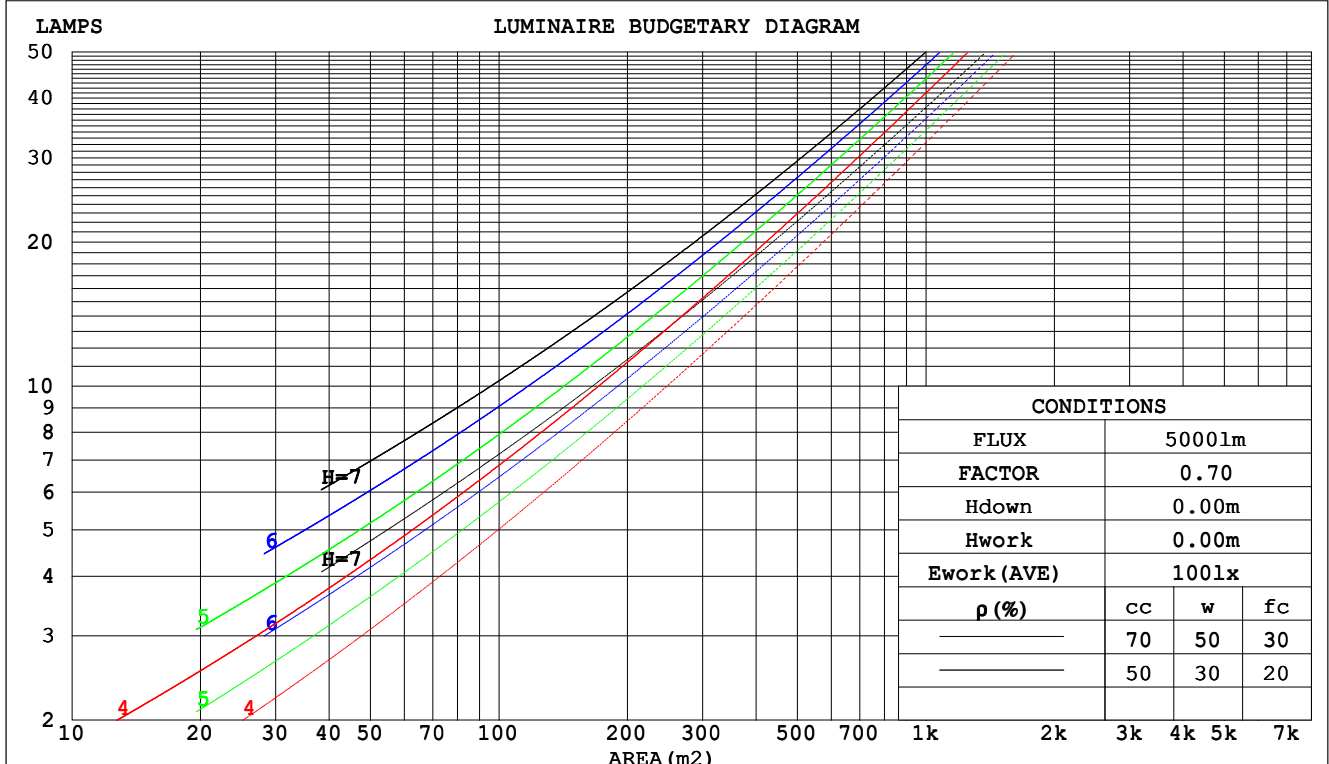
C Range: 0 - 360DEG
C Interval: 15.0DEG
Test Speed: HIGH
Temperature:25.3DEG
Operators:ZR
Test Date:2021-08-18

γ Range: 0 - 180DEG
 γ Interval: 1.0DEG
Test System:EVERFINE GO-2000B_V1 SYSTEM V2.0.354
Humidity:65.0%
Test Distance:8.402m [K=1.0000]
Remarks:

CU AND LUMINAIRE BUDGETARY ESTIMATE DIAGRAM

Test:U:48.00V I:0.1872A P:8.986W PF:1.000 Freq:50.00Hz Lamp Flux:766.573x1 lm		
NAME: M20-T43001A-9G30-120D	TYPE:	WEIGHT:
SPEC.:	DIM.:	SERIAL No.:
MFR.:	SUR.:100*116.4	Shielding Angle:

pcc	80%			70%			50%			30%			10%			0
pw	50%	30%	10%	50%	30%	10%	50%	30%	10%	50%	30%	10%	50%	30%	10%	0
pfc	20%			20%			20%			20%			20%			0
RCR	RCR:Room Cavity Ratio						Coefficients of Utilization(CU)									
0.0	1.13	1.13	1.13	1.08	1.08	1.08	.97	.97	.97	.88	.88	.88	.79	.79	.79	.75
1.0	.93	.87	.82	.88	.83	.78	.79	.75	.71	.71	.68	.65	.63	.61	.58	.54
2.0	.79	.71	.64	.75	.67	.61	.67	.61	.56	.60	.55	.51	.53	.49	.46	.42
3.0	.68	.59	.51	.65	.56	.49	.58	.51	.45	.52	.46	.41	.46	.41	.38	.34
4.0	.60	.50	.43	.57	.48	.41	.51	.43	.38	.45	.39	.34	.40	.35	.31	.28
5.0	.53	.43	.36	.50	.41	.35	.45	.38	.32	.40	.34	.29	.36	.31	.27	.24
6.0	.47	.38	.31	.45	.36	.30	.40	.33	.27	.36	.30	.25	.32	.27	.23	.20
7.0	.42	.33	.27	.40	.32	.26	.36	.29	.24	.33	.27	.22	.29	.24	.20	.18
8.0	.38	.30	.24	.37	.28	.23	.33	.26	.21	.30	.24	.20	.27	.22	.18	.16
9.0	.35	.27	.21	.33	.26	.20	.30	.24	.19	.28	.22	.17	.25	.20	.16	.14
10.0	.32	.24	.19	.31	.23	.18	.28	.21	.17	.25	.20	.16	.23	.18	.14	.13



C Range: 0 - 360DEG
 C Interval: 15.0DEG
 Test Speed: HIGH
 Temperature:25.3DEG
 Operators:ZR
 Test Date:2021-08-18

γ Range: 0 - 180DEG
 γ Interval: 1.0DEG
 Test System:EVERFINE GO-2000B_V1 SYSTEM V2.0.354
 Humidity:65.0%
 Test Distance:8.402m [K=1.0000]
 Remarks:

WEC AND CCEC

Test:U:48.00V I:0.1872A P:8.986W PF:1.000 Freq:50.00Hz Lamp Flux:766.573x1 lm		
NAME: M20-T43001A-9G30-120D	TYPE:	WEIGHT:
SPEC.:	DIM.:	SERIAL No.:
MFR.:	SUR.:100*116.4	Shielding Angle:

pcc	80%			70%			50%			30%			10%			0	
pw	50%	30%	10%	50%	30%	10%	50%	30%	10%	50%	30%	10%	50%	30%	10%	0	
pfc	20%			20%			20%			20%			20%			0	
RCR	RCR:Room Cavity Ratio						Wall Exitance Coefficients(WEC)										
0.0																	
1.0	.406	.231	.073	.392	.223	.071	.364	.209	.067	.338	.195	.063	.314	.182	.059		
2.0	.345	.189	.058	.332	.183	.056	.306	.170	.053	.283	.159	.050	.261	.148	.047		
3.0	.303	.161	.048	.291	.156	.047	.268	.145	.044	.247	.135	.041	.227	.126	.039		
4.0	.271	.141	.041	.260	.136	.040	.239	.127	.038	.220	.118	.036	.202	.110	.033		
5.0	.245	.125	.036	.235	.121	.035	.216	.113	.033	.198	.105	.031	.182	.097	.029		
6.0	.224	.112	.032	.215	.109	.031	.197	.101	.029	.181	.094	.028	.166	.087	.026		
7.0	.206	.102	.029	.198	.098	.028	.182	.092	.026	.167	.085	.025	.152	.079	.023		
8.0	.191	.093	.026	.183	.090	.025	.168	.084	.024	.154	.078	.023	.141	.072	.021		
9.0	.177	.086	.024	.170	.083	.023	.157	.077	.022	.144	.072	.021	.132	.067	.019		
10.0	.166	.080	.022	.159	.077	.021	.147	.072	.020	.135	.067	.019	.123	.062	.018		

pcc	80%			70%			50%			30%			10%			0
pw	50%	30%	10%	50%	30%	10%	50%	30%	10%	50%	30%	10%	50%	30%	10%	0
pfc	20%			20%			20%			20%			20%			0
RCR	RCR:Room Cavity Ratio						Ceiling Cavity Exitance Coefficients(CCEC)									
0.0	.382	.382	.382	.326	.326	.326	.223	.223	.223	.128	.128	.128	.041	.041	.041	
1.0	.380	.348	.320	.325	.299	.275	.222	.206	.190	.128	.119	.111	.041	.038	.036	
2.0	.373	.326	.286	.320	.280	.247	.219	.194	.172	.126	.113	.101	.041	.037	.033	
3.0	.366	.310	.265	.314	.267	.229	.215	.186	.161	.124	.108	.095	.040	.035	.031	
4.0	.358	.297	.251	.307	.257	.218	.211	.179	.154	.122	.105	.091	.039	.034	.030	
5.0	.351	.288	.242	.301	.249	.210	.207	.174	.148	.120	.102	.088	.039	.033	.029	
6.0	.343	.280	.235	.295	.243	.205	.203	.170	.145	.118	.100	.086	.038	.033	.028	
7.0	.336	.274	.230	.289	.237	.200	.200	.166	.142	.116	.098	.085	.037	.032	.028	
8.0	.329	.268	.226	.283	.233	.197	.196	.163	.140	.114	.096	.083	.037	.032	.028	
9.0	.323	.263	.223	.278	.229	.195	.193	.161	.138	.112	.095	.082	.036	.031	.027	
10.0	.317	.259	.221	.273	.225	.193	.190	.158	.137	.111	.094	.082	.036	.031	.027	

C Range: 0 - 360DEG
C Interval: 15.0DEG
Test Speed: HIGH
Temperature:25.3DEG
Operators:ZR
Test Date:2021-08-18

γ Range: 0 - 180DEG
γ Interval: 1.0DEG
Test System:EVERFINE GO-2000B_V1 SYSTEM V2.0.354
Humidity:65.0%
Test Distance:8.402m [K=1.0000]
Remarks:

UGR(Unified Glare Rating) Table

Test:U:48.00V I:0.1872A P:8.986W PF:1.000 Freq:50.00Hz Lamp Flux:766.573x1 lm											
NAME: M20-T43001A-9G30-120D						TYPE:		WEIGHT:			
SPEC.:						DIM.:		SERIAL No.:			
MFR.:						SUR.:100*116.4		Shielding Angle:			
ceiling/cavity	0.7	0.7	0.5	0.5	0.3	0.7	0.7	0.5	0.5	0.3	
walls	0.5	0.3	0.5	0.3	0.3	0.5	0.3	0.5	0.3	0.3	
working plane	0.2	0.2	0.2	0.2	0.2	0.2	0.2	0.2	0.2	0.2	
Room dimensions		Viewed crosswise					Viewed endwise				
x = 2H y = 2H	20.3	21.7	20.9	22.3	23.0	18.0	19.4	18.6	20.0	20.7	
	3H	23.0	24.2	23.6	24.9	25.6	20.1	21.4	20.8	22.0	22.7
	4H	24.5	25.7	25.2	26.3	27.1	21.3	22.5	22.0	23.1	23.9
	6H	26.2	27.3	26.9	28.0	28.7	22.6	23.7	23.3	24.4	25.2
	8H	27.1	28.2	27.8	28.9	29.7	23.4	24.4	24.0	25.1	25.9
	12H	28.2	29.2	28.9	29.9	30.7	24.2	25.2	24.9	25.9	26.8
4H	2H	20.7	21.9	21.3	22.5	23.3	19.0	20.2	19.6	20.8	21.6
	3H	23.6	24.6	24.2	25.3	26.1	21.3	22.3	21.9	23.0	23.8
	4H	25.2	26.2	25.9	26.9	27.7	22.6	23.5	23.3	24.2	25.1
	6H	27.1	28.0	27.9	28.7	29.6	24.0	24.9	24.8	25.6	26.5
	8H	28.2	29.0	29.0	29.7	30.6	24.9	25.6	25.6	26.4	27.3
	12H	29.5	30.2	30.2	31.0	31.9	25.8	26.5	26.6	27.3	28.2
8H	4H	25.5	26.3	26.2	27.0	27.9	23.3	24.1	24.1	24.8	25.7
	6H	27.6	28.3	28.4	29.1	30.0	25.0	25.7	25.8	26.5	27.4
	8H	28.9	29.5	29.7	30.3	31.2	26.0	26.6	26.8	27.4	28.4
	12H	30.4	30.9	31.2	31.7	32.7	27.2	27.7	28.0	28.5	29.5
12H	4H	25.5	26.3	26.3	27.0	27.9	23.5	24.3	24.3	25.0	25.9
	6H	27.8	28.3	28.5	29.1	30.1	25.4	26.0	26.2	26.8	27.7
	8H	29.1	29.6	29.9	30.4	31.4	26.5	27.0	27.3	27.8	28.8
Variations with the observer position at spacings:											
S = 1.0H	+ 0.1 / - 0.1					+ 0.1 / - 0.1					
1.5H	+ 0.2 / - 0.2					+ 0.2 / - 0.3					
2.0H	+ 0.3 / - 0.3					+ 0.2 / - 0.4					

CIE Pub.117, 766.6 lm Total Lamp Luminous Flux Correct (8log(F/F0) = -0.9)

C Range: 0 - 360DEG
C Interval: 15.0DEG
Test Speed: HIGH
Temperature:25.3DEG
Operators:ZR
Test Date:2021-08-18

γ Range: 0 - 180DEG
γ Interval: 1.0DEG
Test System:EVERFINE GO-2000B_V1 SYSTEM V2.0.354
Humidity:65.0%
Test Distance:8.402m [K=1.0000]
Remarks:

UTILIZATION FACTORS TABLE

Test:U:48.00V I:0.1872A P:8.986W PF:1.000 Freq:50.00Hz Lamp Flux:766.573x1 lm		
NAME: M20-T43001A-9G30-120D	TYPE:	WEIGHT:
SPEC.:	DIM.:	SERIAL No.:
MFR.:	SUR.:100*116.4	Shielding Angle:

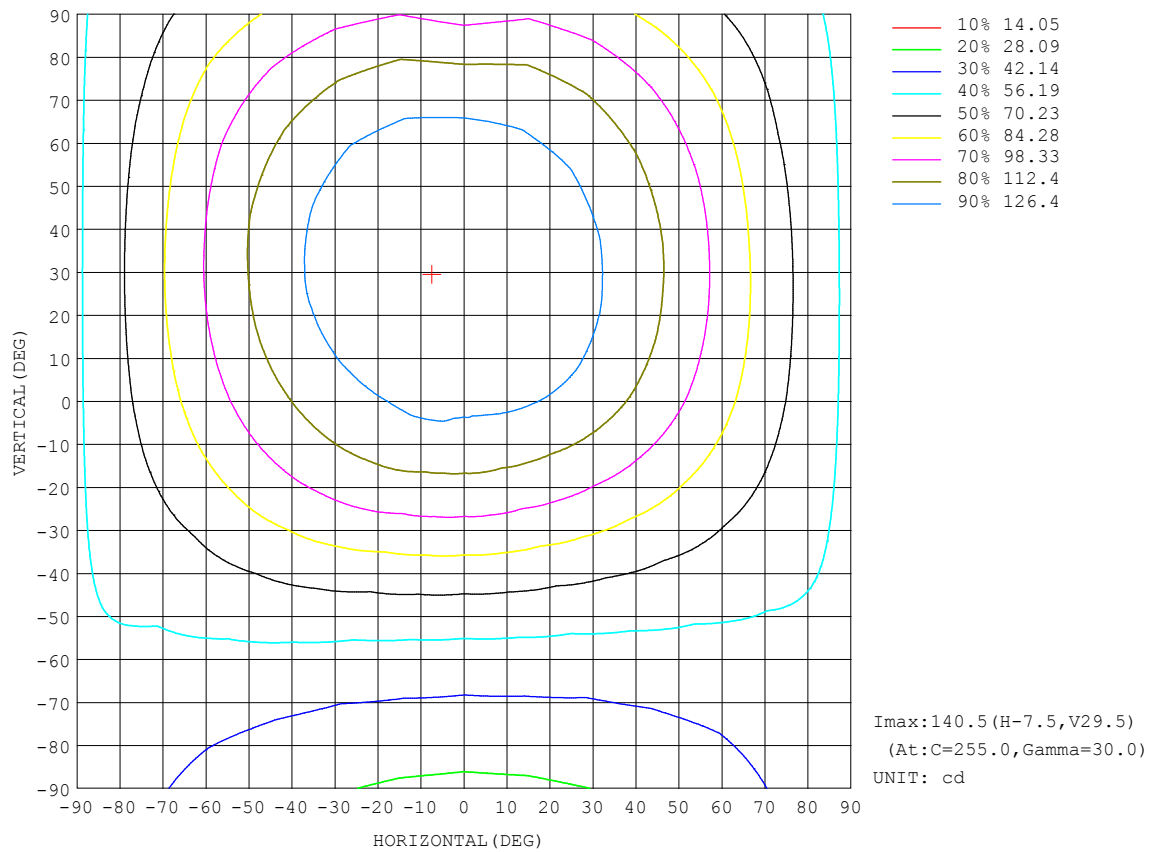
REFLECTANCE										
Ceiling	0.8	0.8	0.8	0.7	0.7	0.7	0.5	0.5	0.5	0
Walls	0.7	0.5	0.3	0.7	0.5	0.3	0.7	0.5	0.3	0
Working plane	0.2	0.2	0.2	0.2	0.2	0.2	0.2	0.2	0.2	0
ROOM INDEX	UTILIZATION FACTORS (PERCENT) $k(RI) \times RCR = 5$									
$k = 0.60$	44	32	24	43	31	24	41	30	23	17
0.80	53	40	31	51	39	31	48	37	30	22
1.00	61	47	38	58	46	38	54	46	36	27
1.25	68	54	45	65	53	44	60	50	42	32
1.50	73	60	51	70	58	49	64	54	47	35
2.00	80	68	59	77	66	58	70	61	54	41
2.50	85	74	65	81	71	63	74	66	59	45
3.00	89	79	71	85	75	68	77	69	63	48
4.00	94	85	78	89	81	75	81	75	69	53
5.00	97	89	83	92	85	80	83	78	73	56
ROOM INDEX	UF (total)									Direct
According to DIN EN 13032-2 2004			Suspended					SHRNOM = 1.25		

C Range: 0 - 360DEG
C Interval: 15.0DEG
Test Speed: HIGH
Temperature:25.3DEG
Operators:ZR
Test Date:2021-08-18

γ Range: 0 - 180DEG
 γ Interval: 1.0DEG
Test System:EVERFINE GO-2000B_V1 SYSTEM V2.0.354
Humidity:65.0%
Test Distance:8.402m [K=1.0000]
Remarks:

ISOCANDELA DIAGRAM

Test:U:48.00V I:0.1872A P:8.986W PF:1.000 Freq:50.00Hz Lamp Flux:766.573x1 lm		
NAME: M20-T43001A-9G30-120D	TYPE:	WEIGHT:
SPEC.:	DIM.:	SERIAL No.:
MFR.:	SUR.:100*116.4	Shielding Angle:

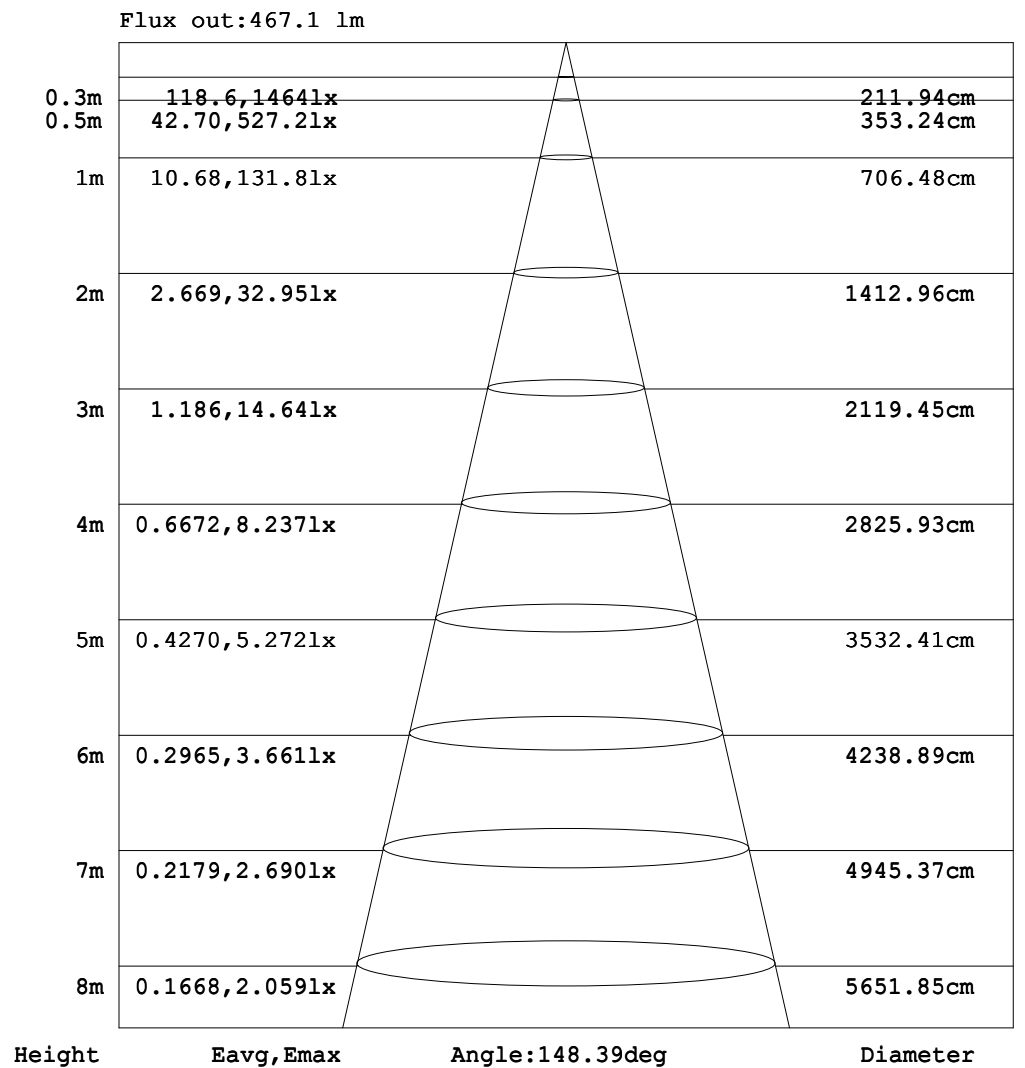


C Range: 0 - 360DEG
C Interval: 15.0DEG
Test Speed: HIGH
Temperature:25.3DEG
Operators:ZR
Test Date:2021-08-18

γ Range: 0 - 180DEG
 γ Interval: 1.0DEG
Test System:EVERFINE GO-2000B_V1 SYSTEM V2.0.354
Humidity:65.0%
Test Distance:8.402m [K=1.0000]
Remarks:

AAI Figure

Test:U:48.00V I:0.1872A P:8.986W PF:1.000 Freq:50.00Hz Lamp Flux:766.573x1 lm		
NAME: M20-T43001A-9G30-120D	TYPE:	WEIGHT:
SPEC.:	DIM.:	SERIAL No.:
MFR.:	SUR.:100*116.4	Shielding Angle:



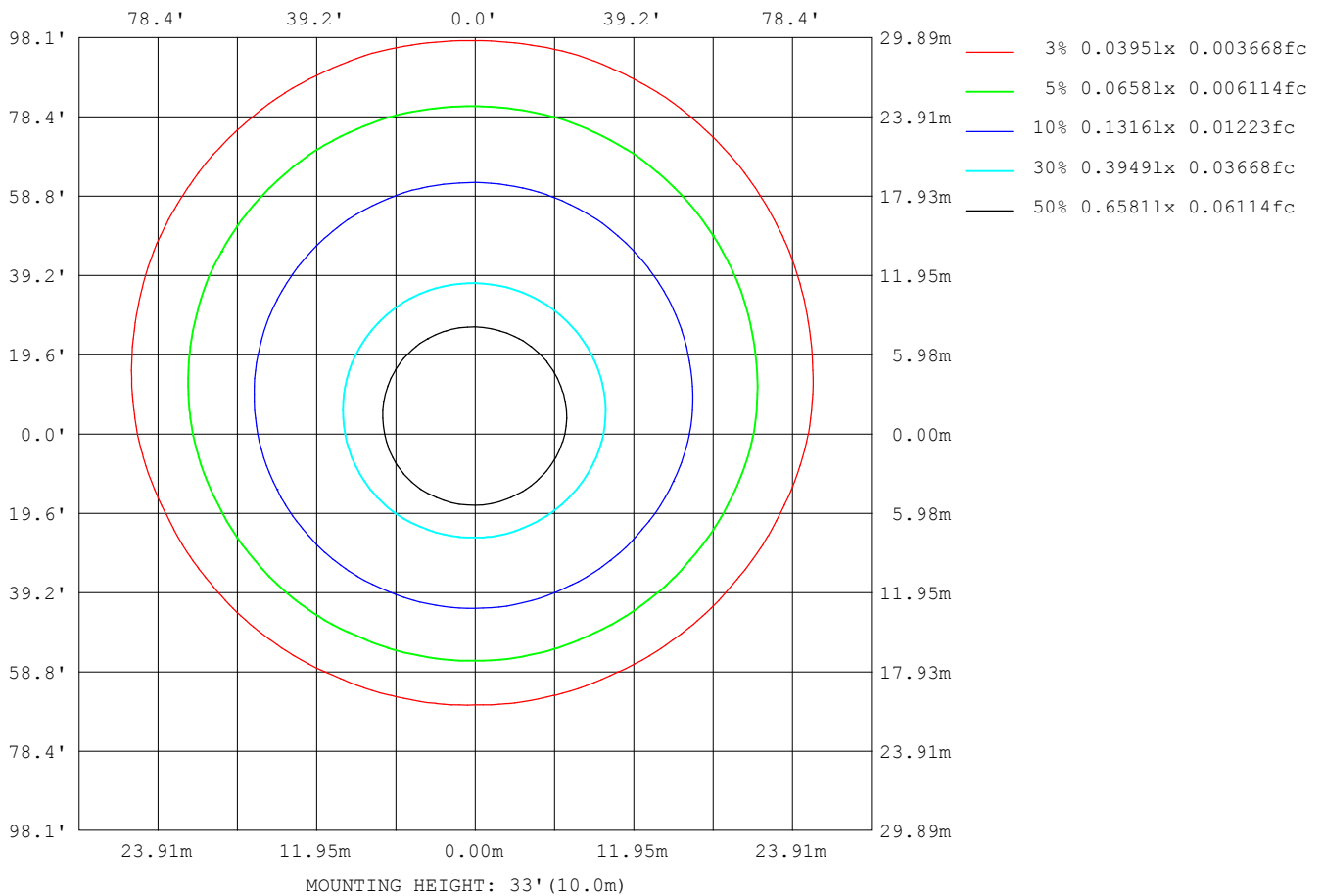
Note:The Curves indicate the illuminated area and the average illumination when the luminaire is at different distance.

C Range: 0 - 360DEG
C Interval: 15.0DEG
Test Speed: HIGH
Temperature:25.3DEG
Operators:ZR
Test Date:2021-08-18

γ Range: 0 - 180DEG
γ Interval: 1.0DEG
Test System:EVERFINE GO-2000B_V1 SYSTEM V2.0.354
Humidity:65.0%
Test Distance:8.402m [K=1.0000]
Remarks:

ISOLUX DIAGRAM

Test:U:48.00V I:0.1872A P:8.986W PF:1.000 Freq:50.00Hz Lamp Flux:766.573x1 lm		
NAME: M20-T43001A-9G30-120D	TYPE:	WEIGHT:
SPEC.:	DIM.:	SERIAL No.:
MFR.:	SUR.:100*116.4	Shielding Angle:



C Range: 0 - 360DEG
C Interval: 15.0DEG
Test Speed: HIGH
Temperature:25.3DEG
Operators:ZR
Test Date:2021-08-18

γ Range: 0 - 180DEG
γ Interval: 1.0DEG
Test System:EVERFINE GO-2000B_V1 SYSTEM V2.0.354
Humidity:65.0%
Test Distance:8.402m [K=1.0000]
Remarks:

LED Avg.L Report

Test:U:48.00V I:0.1872A P:8.986W PF:1.000 Freq:50.00Hz Lamp Flux:766.573x1 lm		
NAME: M20-T43001A-9G30-120D	TYPE:	WEIGHT:
SPEC.:	DIM.:	SERIAL No.:
MFR.:	SUR.:100*116.4	Shielding Angle:

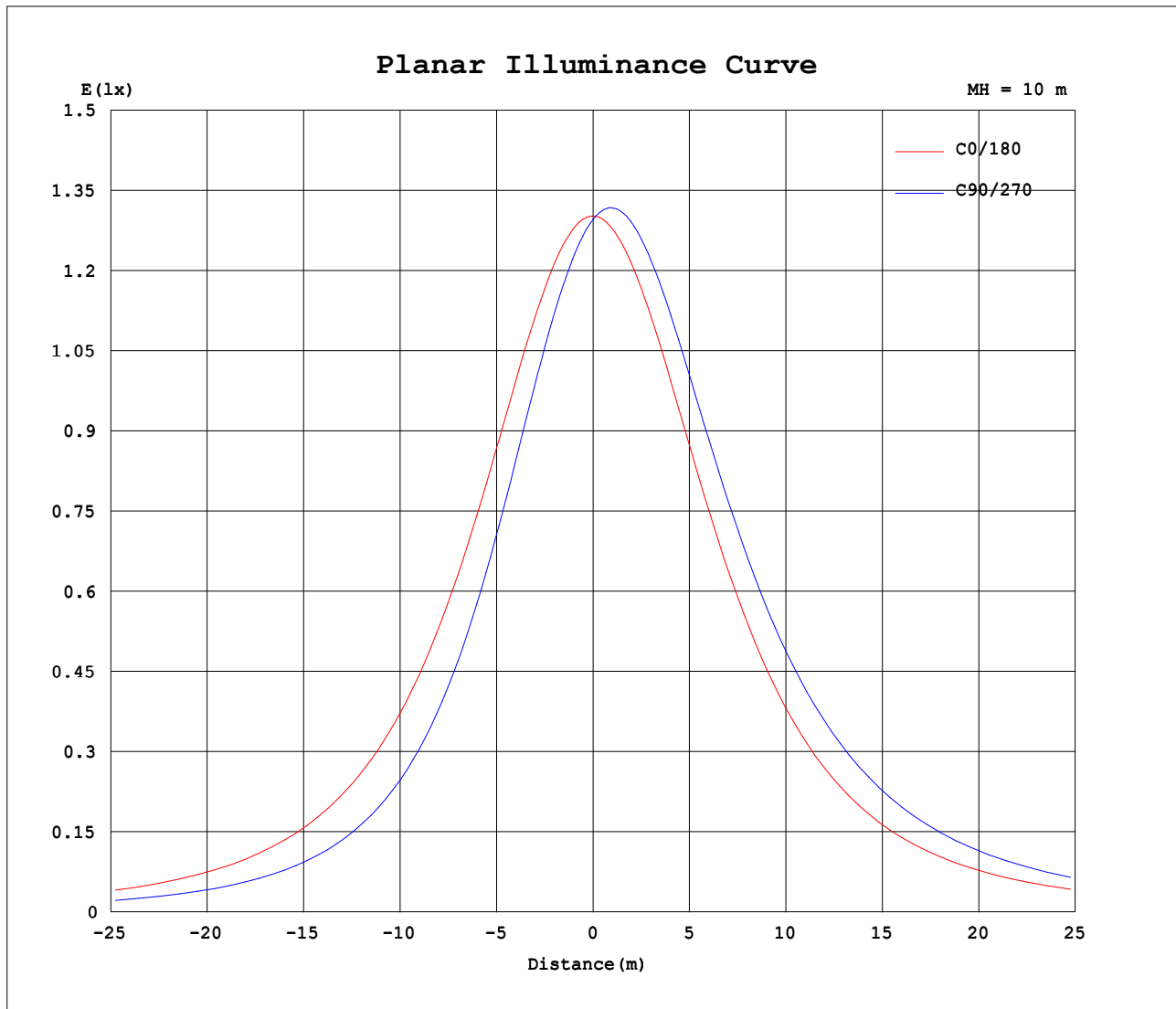
AvgL	cd/m2
L_0~180 (65) av	16975
L_0~180 (75) av	23671
L_0~180 (85) av	58612
L_90~270 (65) av	17580
L_90~270 (75) av	25472
L_90~270 (85) av	64808
L_45 (65) av	17266
L_45 (75) av	24680
L_45 (85) av	62444

Standard: GB/T 29293-2012

C Range: 0 - 360DEG
 C Interval: 15.0DEG
 Test Speed: HIGH
 Temperature:25.3DEG
 Operators:ZR
 Test Date:2021-08-18

γ Range: 0 - 180DEG
 γ Interval: 1.0DEG
 Test System:EVERFINE GO-2000B_V1 SYSTEM V2.0.354
 Humidity:65.0%
 Test Distance:8.402m [K=1.0000]
 Remarks:

Planar Illuminance Curve



C Range: 0 - 360DEG
C Interval: 15.0DEG
Test Speed: HIGH
Temperature: 25.3DEG
Operators: ZR
Test Date: 2021-08-18

γ Range: 0 - 180DEG
 γ Interval: 1.0DEG
Test System: EVERFINE GO-2000B_V1 SYSTEM V2.0.354
Humidity: 65.0%
Test Distance: 8.402m [K=1.0000]
Remarks:

LUMINOUS DISTRIBUTION INTENSITY DATA

Test:U:48.00V I:0.1872A P:8.986W PF:1.000 Freq:50.00Hz Lamp Flux:766.573x1 lm		
NAME: M20-T43001A-9G30-120D	TYPE:	WEIGHT:
SPEC.:	DIM.:	SERIAL No.:
MFR.:	SUR.:100*116.4	Shielding Angle:

Table--1

UNIT: cd

C (DEG) γ (DEG)	0	15	30	45	60	75	90	105	120	135	150	165	180	195	210	225	240	255	270
0	130	130	130	130	130	130	130	130	130	130	130	130	130	130	130	130	130	130	130
5	130	129	127	127	126	126	126	126	126	127	128	129	130	131	132	133	133	134	134
10	129	127	124	123	121	121	121	121	122	123	125	127	129	131	133	135	136	136	137
15	127	124	121	118	116	115	115	115	117	119	121	124	127	131	133	136	138	138	139
20	125	121	116	113	110	109	108	109	111	114	117	121	125	130	133	137	139	140	140
25	122	117	111	107	103	102	101	102	105	109	113	118	123	128	133	137	140	141	141
30	119	112	105	100	96.2	94.3	93.6	95.0	97.8	103	108	113	120	126	132	137	140	141	141
35	115	107	99.3	93.3	88.6	86.4	85.7	87.2	90.4	96.0	102	109	116	124	130	136	139	141	140
40	110	101	92.7	86.0	80.9	78.6	77.7	79.3	82.8	89.0	95.9	104	112	121	128	135	139	140	140
45	105	95.3	85.8	78.7	73.4	70.9	70.1	71.7	75.3	81.7	89.3	98.1	108	117	126	133	137	139	138
50	99.7	89.0	79.0	71.7	66.4	63.8	63.0	64.5	68.1	74.6	82.5	92.0	103	113	123	130	135	137	137
55	94.0	82.5	72.4	65.1	59.9	57.3	56.5	57.9	61.4	67.7	75.6	85.5	97.3	109	119	127	133	135	134
60	87.9	76.1	66.1	59.0	54.0	51.5	50.7	52.0	55.3	61.3	68.9	78.9	91.3	103	114	123	129	132	131
65	81.9	70.0	60.2	53.4	48.6	46.3	45.4	46.8	49.8	55.4	62.7	72.3	85.1	97.6	109	118	125	128	128
70	75.8	64.1	54.7	48.4	43.7	41.5	40.7	42.0	44.8	50.1	56.8	65.9	78.9	91.2	103	113	120	123	123
75	69.9	58.6	49.8	43.7	39.3	37.2	36.4	37.6	40.3	45.2	51.4	59.9	72.7	84.5	97.1	107	115	118	117
80	64.2	53.5	45.2	39.5	35.3	33.2	32.5	33.6	36.2	40.8	46.6	54.4	66.6	77.8	90.2	101	108	112	110
85	58.4	48.8	41.0	35.6	31.7	29.6	28.9	30.0	32.4	36.7	42.2	49.3	60.5	71.1	83.0	93.3	102	106	103
90	52.7	44.4	37.2	32.1	28.3	26.3	25.6	26.6	29.0	33.0	38.1	44.6	54.4	64.7	75.9	85.9	94.1	98.3	94.1
95	47.8	40.4	33.7	28.8	25.2	23.3	22.6	23.5	25.8	29.6	34.5	40.4	46.0	52.4	61.6	72.3	80.7	82.0	85.3
100	30.5	36.8	30.5	25.8	22.3	20.4	19.8	20.7	22.9	26.5	31.0	35.2	29.6	53.6	62.8	65.9	71.1	74.2	76.4
105	27.9	32.1	27.5	23.0	19.7	17.9	17.3	18.1	20.2	23.7	27.9	30.8	28.1	48.9	57.1	64.7	68.9	68.9	68.1
110	26.0	26.1	24.7	20.5	17.4	15.6	15.0	15.8	17.8	21.1	25.1	26.1	26.3	44.5	51.9	58.5	64.3	64.3	60.4
115	24.1	20.7	21.9	18.2	15.2	13.5	12.9	13.7	15.6	18.7	22.4	21.9	24.5	40.5	47.1	52.9	57.9	60.4	53.6
120	22.4	16.2	18.8	16.2	13.3	11.6	11.1	11.8	13.6	16.6	19.6	18.2	22.8	36.6	42.7	47.7	52.1	54.2	47.7
125	20.9	13.8	15.7	14.2	11.6	9.94	9.44	10.1	11.9	14.6	16.7	14.7	21.2	32.8	38.7	43.1	46.8	48.5	42.5
130	19.4	12.7	12.8	12.1	10.1	8.47	7.97	8.65	10.4	12.7	13.9	11.9	19.7	29.4	35.1	38.9	42.1	43.4	37.8
135	18.1	12.1	10.2	10.1	8.64	7.24	6.71	7.42	8.99	10.7	11.3	10.8	18.4	26.3	31.7	35.1	37.8	38.9	33.5
140	16.9	11.7	8.25	8.26	7.26	6.15	5.73	6.33	7.63	8.90	9.10	10.0	17.2	23.6	28.7	31.5	33.8	34.7	29.7
145	15.8	11.4	8.03	6.65	5.99	5.21	4.90	5.35	6.38	7.25	7.23	9.51	16.0	21.3	25.7	28.3	30.3	30.9	26.2
150	14.5	10.9	7.70	5.40	4.93	4.38	4.22	4.52	5.27	5.83	6.43	9.00	15.0	19.3	23.1	25.4	27.0	27.5	23.1
155	13.1	10.2	7.34	5.06	4.10	3.74	3.67	3.89	4.39	4.71	6.09	8.34	13.8	17.4	20.6	22.7	24.0	24.3	20.3
160	11.5	8.99	6.42	4.37	3.48	3.30	3.28	3.44	3.72	3.98	5.58	7.49	12.1	15.1	18.0	19.9	21.2	21.4	17.8
165	8.95	6.67	4.63	3.23	3.10	3.02	2.99	3.09	3.25	3.60	4.93	6.39	9.11	11.6	14.3	16.3	17.9	18.4	15.4
170	5.84	4.30	3.09	2.83	2.87	2.78	2.84	2.92	2.99	3.16	4.01	5.00	5.92	7.79	9.88	11.7	13.4	14.4	12.3
175	3.17	2.70	2.75	2.78	2.77	2.79	2.74	2.83	2.84	2.78	2.79	2.83	3.12	4.02	5.11	6.02	6.67	6.47	4.68
180	2.68	2.70	2.75	2.78	2.78	2.79	2.74	2.81	2.79	2.74	2.70	2.68	2.69	2.73	2.74	2.79	2.78	2.83	2.76

C Range: 0 - 360DEG
C Interval: 15.0DEG
Test Speed: HIGH
Temperature:25.3DEG
Operators:ZR
Test Date:2021-08-18

γ Range: 0 - 180DEG
γ Interval: 1.0DEG
Test System:EVERFINE GO-2000B_V1 SYSTEM V2.0.354
Humidity:65.0%
Test Distance:8.402m [K=1.0000]
Remarks:

LUMINOUS DISTRIBUTION INTENSITY DATA

Test:U:48.00V I:0.1872A P:8.986W PF:1.000 Freq:50.00Hz Lamp Flux:766.573x1 lm		
NAME: M20-T43001A-9G30-120D	TYPE:	WEIGHT:
SPEC.:	DIM.:	SERIAL No.:
MFR.:	SUR.:100*116.4	Shielding Angle:

Table--2

UNIT: cd

C (DEG) γ (DEG)	285	300	315	330	345														
0	130	130	130	130	130														
5	133	133	132	132	131														
10	136	135	134	132	131														
15	138	137	135	132	130														
20	139	138	135	132	129														
25	140	138	134	131	127														
30	139	137	134	129	124														
35	139	136	132	127	121														
40	138	135	130	124	117														
45	136	133	127	121	113														
50	135	131	125	117	109														
55	132	128	121	113	104														
60	129	125	117	108	97.9														
65	126	121	113	103	91.9														
70	122	116	107	97.0	85.4														
75	117	111	101	90.6	78.9														
80	111	105	94.8	83.8	72.4														
85	104	98.1	87.7	76.9	66.2														
90	97.0	90.7	80.5	70.2	60.2														
95	89.2	83.1	73.2	63.7	54.7														
100	81.2	75.4	66.3	57.7	49.7														
105	73.4	68.1	59.9	52.3	45.1														
110	66.0	61.3	54.0	47.4	41.0														
115	59.2	55.1	48.7	42.9	36.8														
120	53.1	49.5	43.9	38.8	32.5														
125	47.5	44.5	39.6	35.0	28.6														
130	42.5	39.9	35.6	31.6	25.2														
135	38.0	35.8	32.0	28.4	22.3														
140	33.9	32.0	28.7	25.3	19.8														
145	30.2	28.6	25.7	22.5	17.7														
150	26.8	25.4	22.9	19.9	15.7														
155	23.7	22.5	20.2	17.6	13.6														
160	20.8	19.8	17.6	15.2	11.6														
165	18.2	17.2	14.9	12.5	9.53														
170	15.1	13.9	11.2	9.03	7.22														
175	5.97	5.60	4.78	4.49	3.84														
180	2.80	2.79	2.73	2.71	2.67														

C Range: 0 - 360DEG
C Interval: 15.0DEG
Test Speed: HIGH
Temperature:25.3DEG
Operators:ZR
Test Date:2021-08-18

γ Range: 0 - 180DEG
γ Interval: 1.0DEG
Test System:EVERFINE GO-2000B_V1 SYSTEM V2.0.354
Humidity:65.0%
Test Distance:8.402m [K=1.0000]
Remarks: